

handrail sizes & part no.

Choose a Style & Size	
flat	round
<input type="checkbox"/> 1.5" x .375" AHSC1500()	<input type="checkbox"/> 1.5" Diameter AHRC1500()
<input type="checkbox"/> 2.0" x .375" AHSC2000()	<input type="checkbox"/> 2.0" Diameter AHRC2000()
<input type="checkbox"/> 3.0" x .375" AHSC3000()	<input type="checkbox"/> 3.0" Diameter AHRC3000S
<input type="checkbox"/> 4.0" x .375" AHSC4000()	
<input type="checkbox"/> 6.0" x .375" AHSC6000S	

Select a Finish	
	Brushed Polished*
Stainless Steel(S) <input type="checkbox"/>	<input type="checkbox"/> (SP)
Bronze (#385 alloy).....(B) <input type="checkbox"/>	<input type="checkbox"/> (BP)
Yellow Brass (#260 alloy) (YB) <input type="checkbox"/>	<input type="checkbox"/> (YBP)
Copper(C) <input type="checkbox"/>	<input type="checkbox"/> (CP)
*Additional charges apply.	

E-Form Instructions

To fill out form, click and type in highlighted form fields. Use Email button to send it.

If preferred you can print this form, fill out by hand and fax it to us.

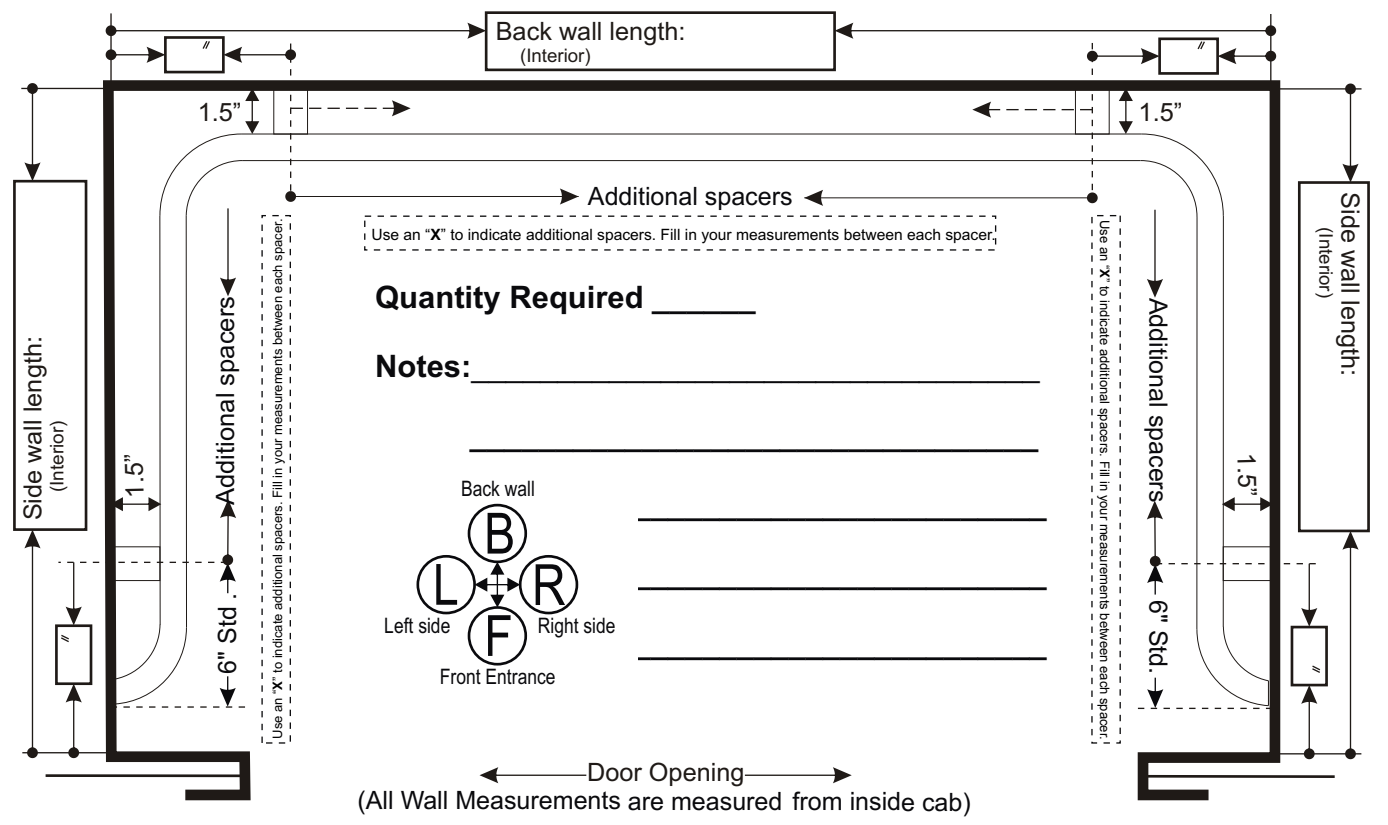
Accurate & Proper measurements are YOUR Responsibility-TAKE CARE

Select a Sidewall Return	
	Round Flat
<input type="checkbox"/> L <input type="checkbox"/> R	
<input type="checkbox"/>Straight.....	
<input type="checkbox"/>Bent.....	
<input type="checkbox"/>Bullet.....	
	Round Handrails Only

Select a Spacer Type
<input type="checkbox"/> Exterior Cab Mounting -Preferred standard spacer method of installation. Requires cab exterior access. Supplied bolt passes from cab exterior, through wall, then through spacer and threads into handrail. Bolt can be tightened securely, pulling cab shell and handrail tight together.
<input type="checkbox"/> In Cab Mounting (Removable) -An excellent option when the backwall is mounted and a single spacer mount on each side wall. Allows for each side wall to be gently flexed and inserted into the spacer mount system.
<input type="checkbox"/> Split Spacer Assembly (In Cab Removable) -Our most innovative design. The best option for in-cab installations where multiple spacer mounts are required on all three walls. With spacers mounted to the wall, the handrail is raised, so the welded pins rest into the top saddles. The bottom half of the split spacers bolt into place, securing the handrail to the cab walls.

Handrail Worksheet

Save a Tree. Use our E-Forms.



Company: _____

Job Name: _____

Order #: _____ P.O.#: _____

Notes: _____

Contact Name: _____



SHIP TO ADDRESS: _____

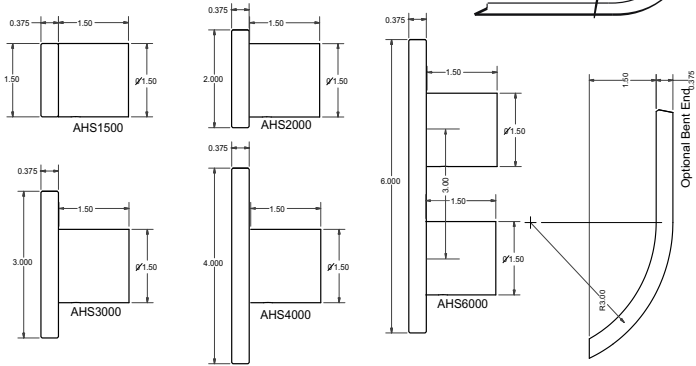
Phone () _____ - _____

Fax () _____ - _____

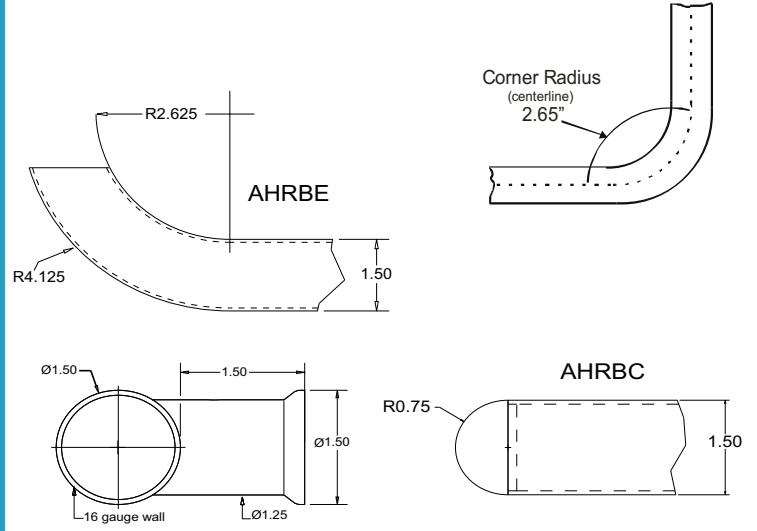


AHCS series solid flat bar/AHCR series round continuous rail engineering data

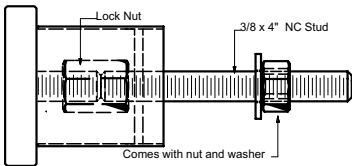
Solid Flat Bar



Round Rail

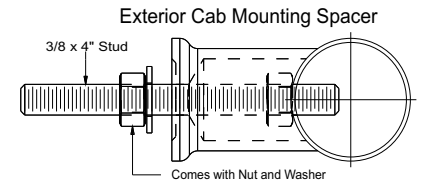


exterior cab mounting spacer

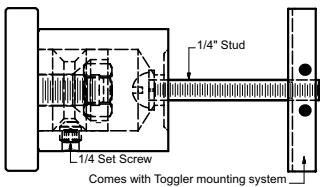


PULL-OUT Values For 3/8" Stud

Handrail Thread-lock fastener engineered test data Pull-out values for removal of threaded fasteners from Lustre Products' handrails = 1509 lbs.

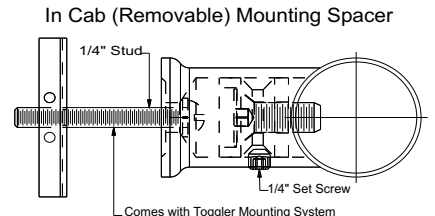


in cab (removable) mounting spacer



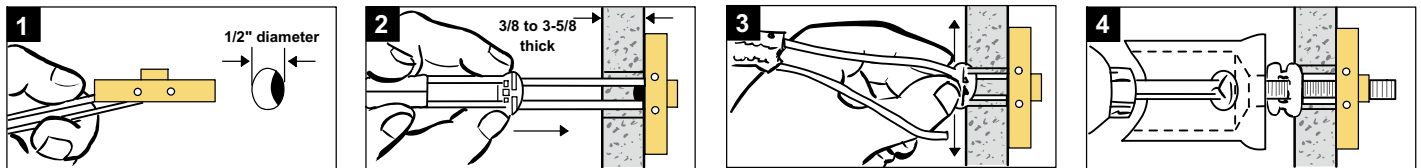
PULL-OUT Values For 1/4"- 20 Bolt

265 lbs (120 kg) ultimate tensile load in 1/2" drywall
 306 lbs (162 kg) ultimate tensile load in 5/8" drywall
 925 lbs (420 kg) ultimate tensile load in concrete block
 1,283 lbs (583 kg) ultimate tensile load in steel plate

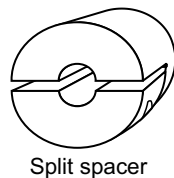
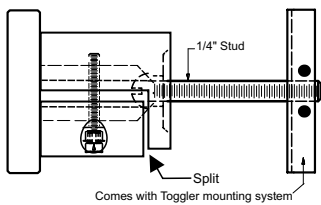


Tests by independent test laboratory show ultimate load. Industry safety standards recommend 1/4 of the values for actual applications. Age and conditions of substrate will cause load values to vary.

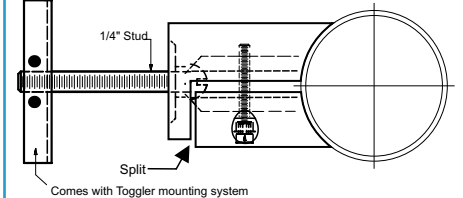
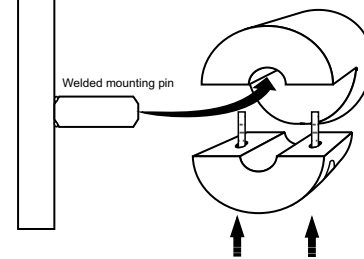
In Cab Removable Handrail Spacer Installation Instructions



in cab (removable) mounting split spacer



Split Spacer Installation Diagram



Shipping

All Continuous rails are crossbraced and packaged for commercial transport.